

Virtual Tour Tips

Navigating Through the Virtual Tours

Using the Map

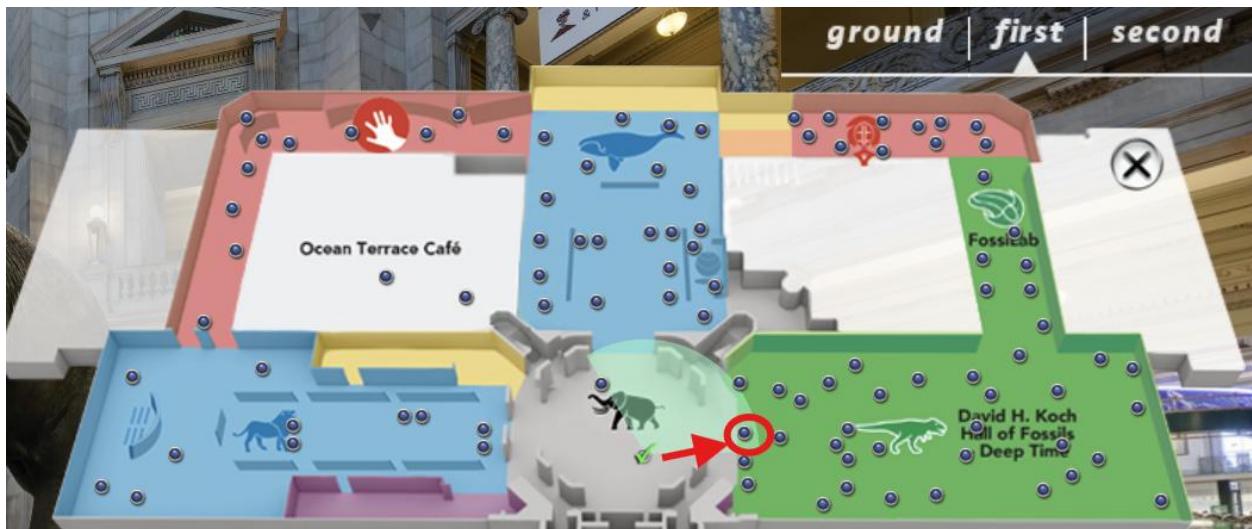
First, select a floor.



A floor map of that floor will open. If you hover over one of the dots, a tooltip will indicate the location in virtual tour.



If you click on the dot, you will jump to the location in the virtual tour.



Using the Floor Arrows



You should also see arrows on the floors of the various stops on the virtual tour. Hovering over each arrow will bring up tooltip text indicating the location that the arrow will take you to when you click on the arrow.

Using the Control Bar



This button will take you to the previous stop.



This button will take you to the next stop.

Using the slider



This button will open a slider displaying thumbnails of the stops in the tour. (Clicking it again will close the slider.)



If you hover over a thumbnail, a tooltip will come up indicating the location in the virtual tour. Clicking on the thumbnail will take you to that location.

Other Controls on the Control Bar



This button will rotate the current scene to the left.



This button will rotate the current scene to the right.



This button will rotate the current scene upwards.



This button will rotate the current scene downwards.



This button will zoom into the current scene.



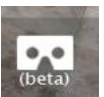
This button will zoom out of the current scene.



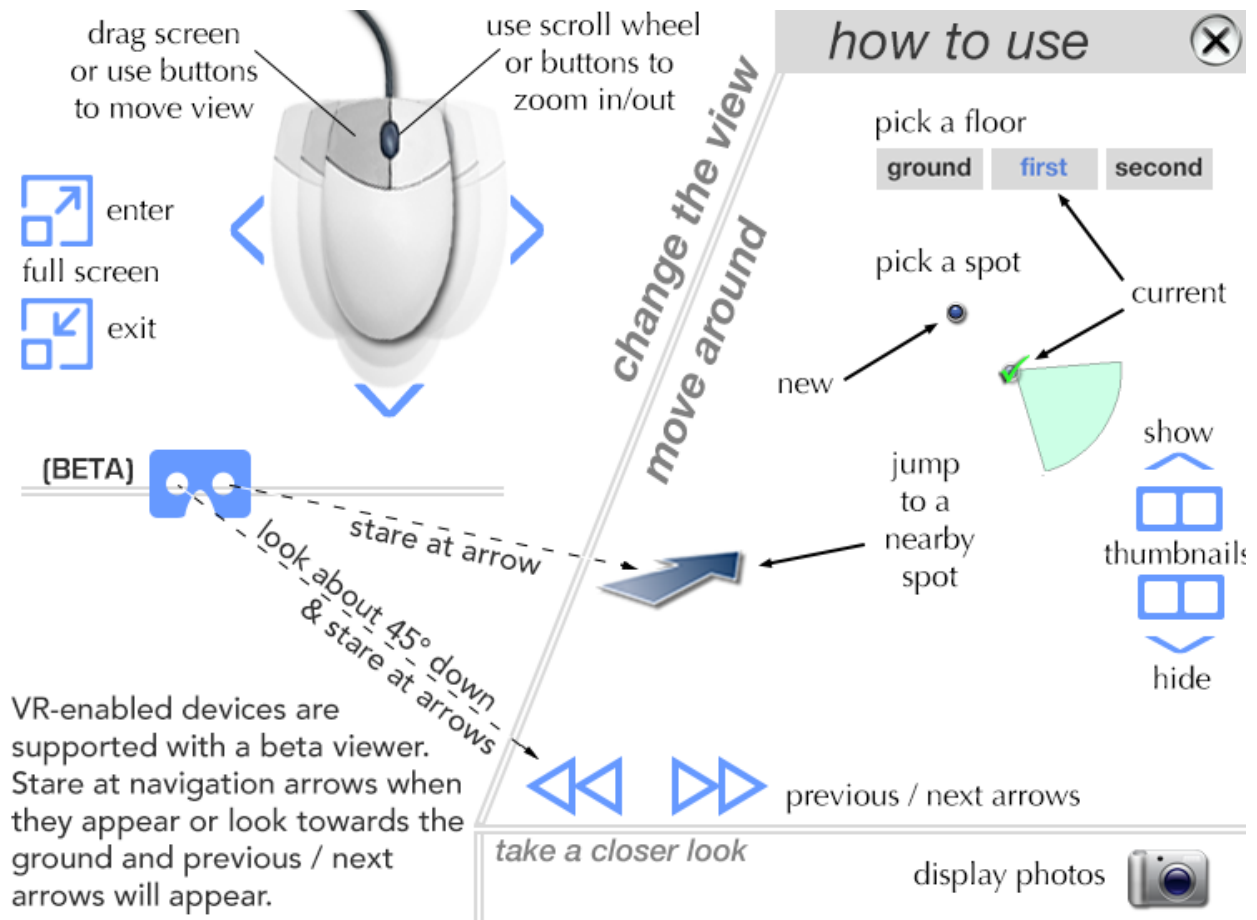
The first button will bring the current scene into full-screen mode. The second button will exit full-screen mode.



This control will close the control bar. Be careful. You will need to hover over this up arrow to bring the control bar back up.



This button will bring the current scene and virtual tour into a stereoscopic virtual reality mode. This virtual reality is experimental using those cardboard Google Goggles.



Close-up Pop-ups

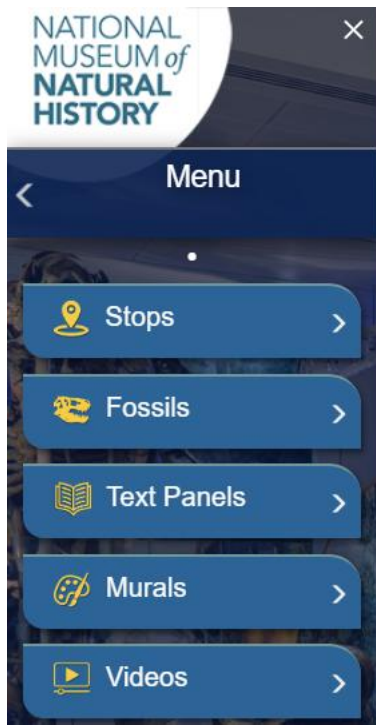


If you see a camera icon along the virtual tour, click on it get a pop-up displaying a close-up of the nearby specimen (museum collection object). The pop-up will contain a control bar that is like the main control bar. It will move you through object close-ups in a comparable manner to the way the main control bar moves you through the virtual tour.



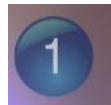
David H. Koch Hall of Fossils: Deep Time

Navigation



In addition to the previous methods, you can also move through the Deep Time virtual tour by using this left-hand navigation bar. You can also use this menu open pop-ups that display close-ups of fossils, text panels, and murals—and pop-ups that play videos.

Pop-ups



Clicking on a button like this will also bring up a pop-up that will display close-ups of fossils, text panels, and murals—and pop-ups that play videos.

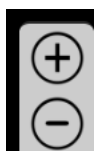
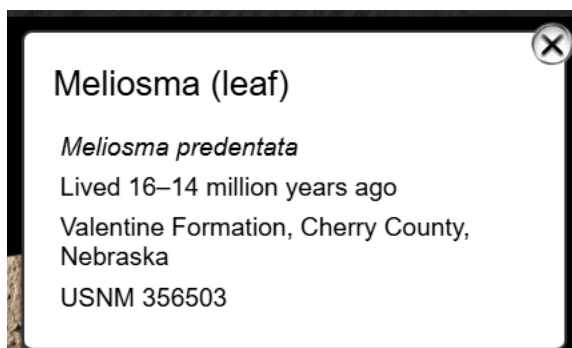
Close-up Controls



This control will cycle you through multiple specimens or multiple views of the same specimen.



This button will display a caption or label for this fossil or other asset.



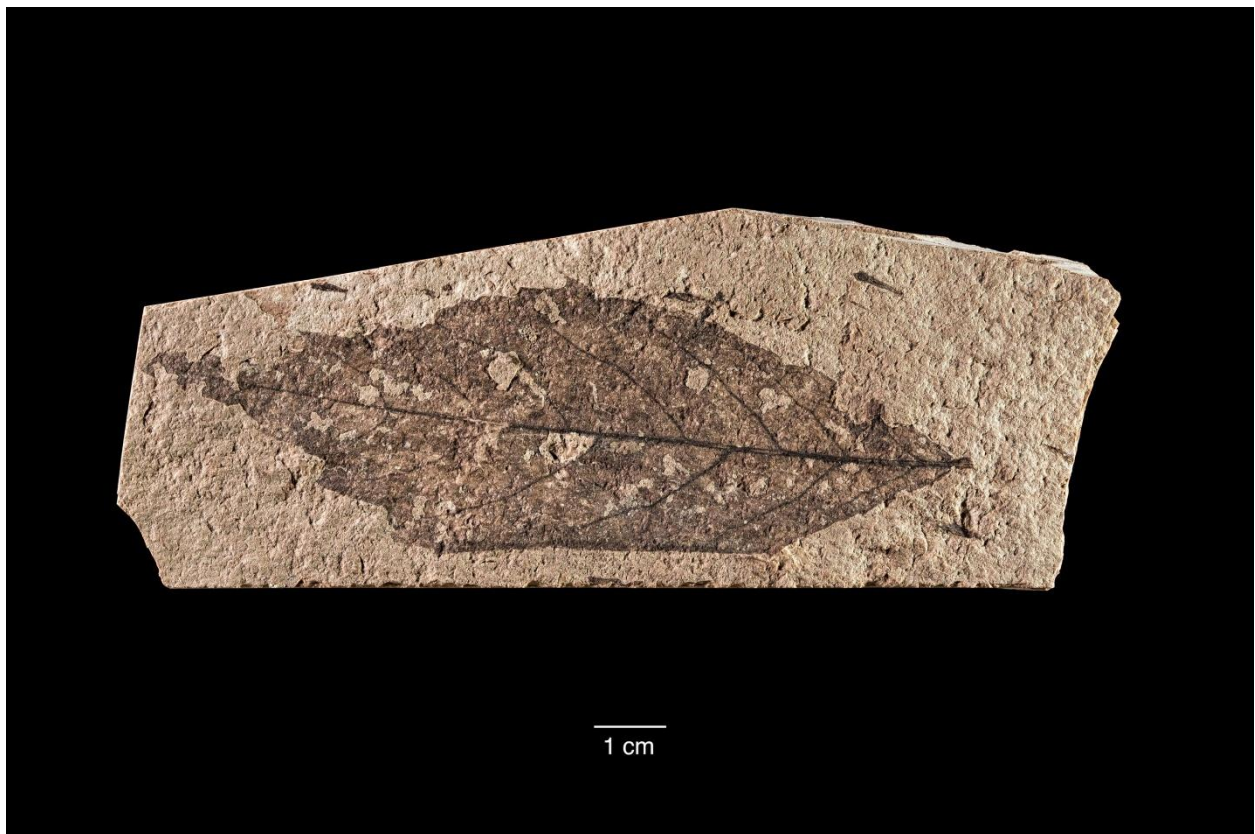
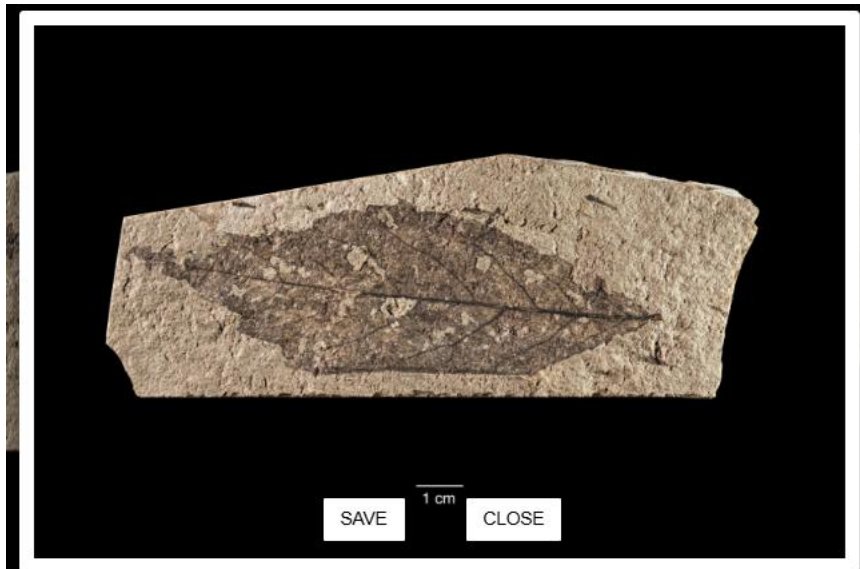
These plus and minus buttons will zoom into and out of the fossil or other asset.



These controls will allow you to bring the pop-up into and out of full-screen mode.

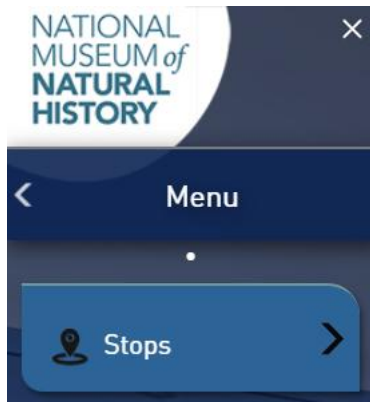


Clicking on this camera icon will allow you to take a snapshot of the asset.



This is a copy of the saved snapshot.

Cellphone: Unseen Connections



The Cellphone virtual tour has a left-hand navigation bar like the one in the Deep Time virtual tour.